



Instant View IP Cameras



Quick Start Guide

What is in the box

Before starting installation, check that your box has all the hardware needed for installation. Examine all the hardware items to make sure they are not damaged. The box should include one each of these:

- IP camera
- Mounting bracket and mounting hardware
- AC power adapter
- Network cable
- CD ROM
- Quick Installation Guide (this document)

Hardware installation

1. Connect the IP camera to the network router and start the camera.
 - A. Insert one end of the supplied network cable in the camera's network port and the other end of the cable into an available port on the network router.
 - B. Insert the tip of the supplied power adapter into the camera's power port and insert the other end of the power cable into the electrical supply.
 - C. Check that the camera's power indicator light (yellow) is lit, and the Network Indicator light (green) is flashing. These are located near the camera's network port.



View your camera via Android mobile phone

1. Install the *Polaroid IP Instant Viewer* software.
 - A. Enter the URL: www.polaroidsafety.com in your camera's web browser, or scan the QR code shown here to access the web site.
 - B. Follow the instructions on the web page to install the app on your mobile phone.
 - C. The *Polaroid IP* icon will be visible on the phone's screen after successful installation.
2. Add your camera to the *Polaroid IP Instant Viewer* app.
 - A. Tap the *Polaroid IP* icon to start the app, and click "Add" to add your camera.



Scan method:

- Locate the QR code on the UID sticker located on the bottom of the IP camera.
- Click the "Scan" button.
- Scan the QR code on the UID sticker.
- When the UID code is scanned successfully, the phone's screen will update with the information.
- Enter the default security code: "888888"



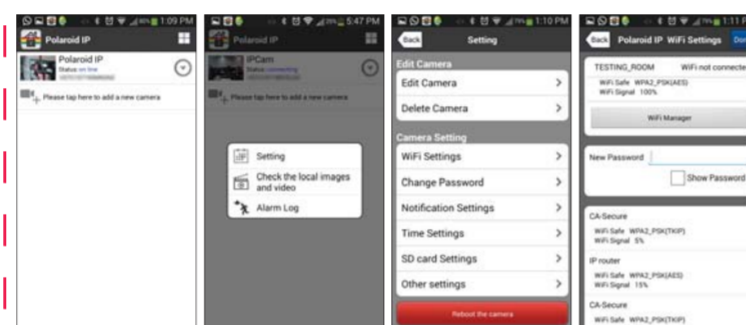
- If desired, enter a name for the camera in the "Name" field.
- Click "OK" to complete adding the camera.

Search method:

Note: This method will only work when the camera is on the same local network (LAN) as the smartphone.

- Click the "Search" button.
- Choose the desired camera from the list, by matching the UID shown.
- Enter the default security code: "888888"
- If desired, enter a name for the camera in the "Name" field.
- Click "OK" to complete adding the camera.

- B. When added successfully, the new camera will appear in the app's camera list.
3. Click the camera in the list to view the live video from the camera on your mobile phone.



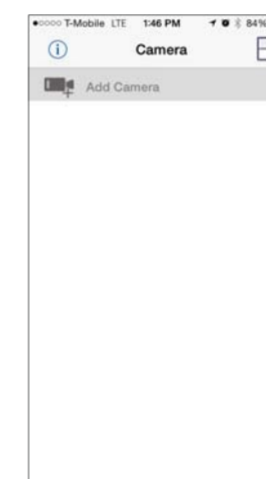
Note: Cameras with Pan/Tilt capability can be controlled by touching and moving the video display on the mobile phone. The display will change as the camera's position responds to the control.

View your camera via iPhone

1. Install the *Polaroid IP Instant Viewer* software.
 - A. Enter the URL: www.polaroidsafety.com in your camera's web browser, or scan the QR code shown here to access the web site.
 - B. Follow the instructions on the web page to install the app on your mobile phone.
 - C. The *Polaroid IP* icon will be visible on the phone's screen after successful installation.



2. Add your camera to the *Polaroid IP Instant Viewer* app.
 - A. Tap the *Polaroid IP* icon to start the app, and click "Add" to add your camera.



Scan method:

- Locate the QR code on the UID sticker located on the bottom of the IP camera.
- Click the "Scan" button.
- Scan the QR code on the UID sticker.
- When the UID code is scanned successfully, the phone's screen will update with the information.
- Enter the default security code: "888888"

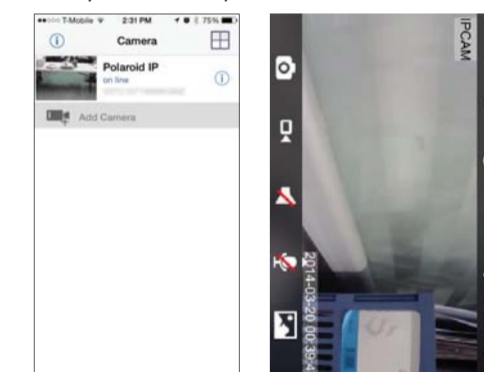


- If desired, enter a name for the camera in the "Name" field.
- Click "Done" to complete adding the camera.

Search method:

Note: This method will only work when the camera is on the same local network (LAN) as the smartphone.

- Click the "Search" button.
 - Choose the desired camera from the list, by matching the UID shown.
 - Enter the default security code: "888888"
 - If desired, enter a name for the camera in the "Name" field.
 - Click "Done" to complete adding the camera.
- B. When added successfully, the new camera will appear in the app's camera list.
 3. Click the camera in the list to view the live video from the camera on your mobile phone.

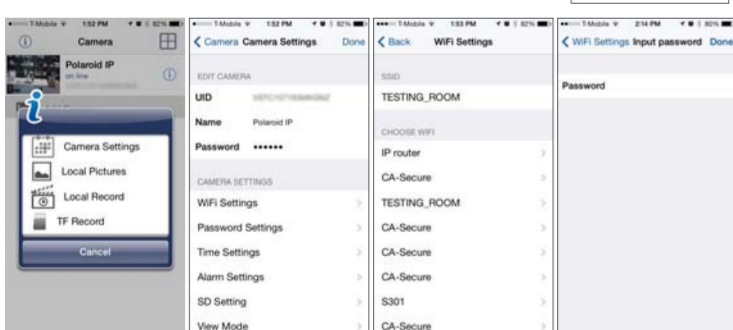
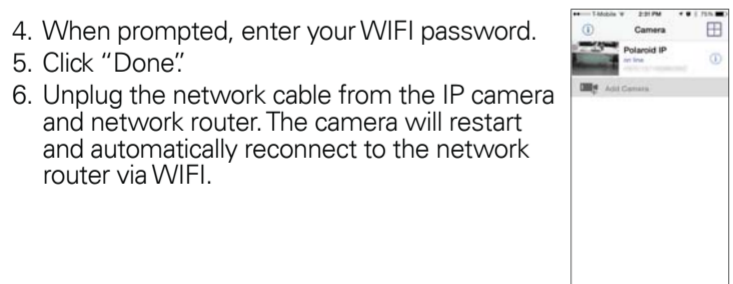


iPhone WiFi setup

1. Click the circled "i" icon at the right of the camera in the camera list.
2. Click "WiFi Settings"
3. Select your router from the SSID list that appears.

Android WiFi setup

1. Click the icon at the right of the camera in the camera list.
2. Click "Setting"
3. Click "WiFi Setting"
4. Select your router from the SSID list that appears.
5. When prompted, enter your WiFi password.
6. Click "OK"
7. Unplug the network cable from the IP camera and network router. The camera will restart and automatically reconnect to the network router via WiFi.



Note: Cameras with Pan/Tilt capability can be controlled by touching and moving the video display on the mobile phone. The display will change as the camera's position responds to the control.

View your camera via PC

1. Install the *Polaroid IP Instant Viewer* software.
 - A. Enter the URL: www.polaroidsafety.com in your PC's web browser.
 - B. Locate the download link and follow the instructions on the web page to install the program on your PC.
2. Add your camera to the *Polaroid IP Instant Viewer* program.

- A. Start the *Polaroid IP Instant Viewer* program (Either search for the *Polaroid* program or double click the *Polaroid IP* icon to start the program), and click "Add Camera" to add your camera.



LAN (local area network) method:

- If desired, enter a name for the camera in the "Name" field.
- Click the "Find" button.
- Select the camera from the list.
- Click "OK" to close the list.
- Enter the default security code: "888888" in the Password area.
- Click "OK" to complete adding your camera.

WAN (wide area network/Internet) method:

- Add the camera's UID (located on the bottom of the IP camera) in the "UID" field.
 - Enter the default security code: "888888" in the Password area.
 - Click "OK" to complete adding your camera.
- B. When added successfully, the new camera is added to the list on the program's main screen.



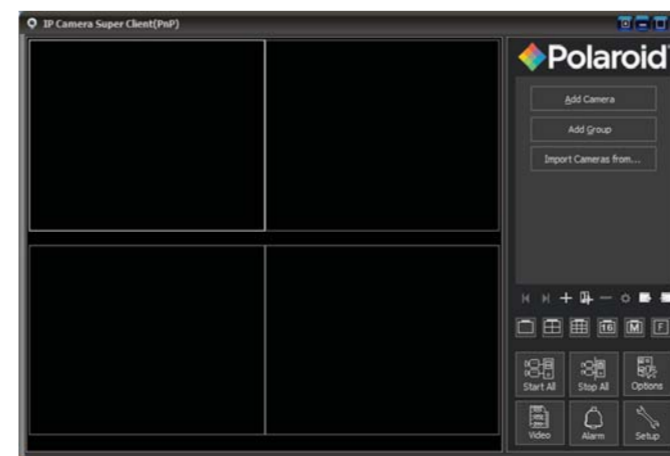
- C. To add additional cameras, right click on the camera list in the program's main screen and follow the procedure above.
3. Click the camera in the list to view the live video from the camera.
4. Click a second time within the active video window to access available controls for that camera.

PC WIFI Setup

To connect cameras in range of your wireless network router to the program:

- Click "Add" from the program's main screen.
- Click "Set WIFI"
- Select your router from the SSID list that appears.
- When prompted, enter your WiFi password.
- Click "OK"

The camera will restart and automatically reconnect to the network router via WIFI.



Visit the section for your camera model at www.PolaroidSafety.com to download the latest version of the User Manual and other materials.

PLEASE NOTE: WE MAINTAIN A CALL CENTER FOR CUSTOMER SERVICE ISSUES AND FOR INSTALLATION GUIDANCE AND HELP. SHOULD YOU NEED OUR ASSISTANCE PLEASE CALL US AT 1-877-836-1190

PLR IP Holdings, LLC, its licensees and affiliates, fully supports all electronic waste initiatives. As responsible stewards of the environment, and to avoid violating established laws, you should properly dispose of this product in compliance with all applicable regulations, directives or other governances in the area where you reside. Please check with local authorities or the retailer where you purchased this product to determine a location where you can appropriately dispose of the product.

You may also go to www.polaroid.com and reference Social Responsibility <http://www.polaroid.com/social-responsibility> to learn more about the specific laws in your area and to locate a collection facility near your home. If your electronic device has internal memory on which personal or other confidential data may be stored, you may want to perform a data sanitization process before you dispose of your device to assure another party cannot access your personal data. Data sanitization varies by the type of product and its software, and you may want to research the best sanitization process for your device before disposal. You may also check with your local recycling facility to determine their data sanitization procedures during the recycling process.

Polaroid, Polaroid & Pixel, Polaroid Classic Border Logo, and Polaroid Color Spectrum are trademarks of PLR IP Holdings, LLC, used under license. All other trademarks are the property of the respective owner, who has not sponsored, endorsed or approved this product. PLR IP Holdings, LLC does not manufacture this product or provide any Manufacturer's Warranty or support.

Distributed by: C&A Licensing, LLC
2 Bergen Turnpike
Ridgefield Park, NJ 07660 USA
© 2014 All Rights Reserved

MADE IN CHINA